



FROM THE CHAIRMAN

I am pleased to provide you with an update of our activities for the last year, as Charterhouse in Southwark has matured into its role as a grant making charity. Since our merger with Charterhouse in Southwark Endowment Fund in 2010, our objective has been to follow the original purpose for which the charity was founded in 1885, through the provision of support for young people and those in need, particularly in the Bermondsey area of Southwark. In this regard we have provided funding for a summer camp for 240 children, an apprentice scheme for 16 young leaders, a football club with 640 members, as well as the promotion of the arts through our sponsorship of an outreach programme run by Peckham Shed. More details of each of these activities is given below.

In addition to the support we have given to youth and community groups across Bermondsey, we are very pleased to have been able to continue to strengthen our relationship with the School, particularly as a result of the encouragement given by the Chairman of the Governors, the Headmaster and the Second Master. To this end, we ran a competition last year amongst sixth form specialists by offering to match fund the best charitable initiative presented to us.

On this occasion the award went in to a project proposed by Jamie Murray (Bodeites) who raised money by selling calendars that he had designed and published, in aid of the Pirthi Bedi Foundation (see below). We are keen to run a similar competition this year and all ideas are welcome.

This year has seen us establish a partial bursary (with the school matching the balance of the cost) for a high achieving 16 year old student from Southwark to enter the sixth form at Charterhouse, in a collaboration that maintains our commitment to the borough and the School.

In total we have spent over **£81,000** in the last year in support of the projects mentioned and, as ever, I am indebted to my fellow trustees (Armel Cates (L'61), Sebastian Lyon (B'85), John Gillespie (R'95), Charlie Hobson (Master of Sutton's Hospital) and the Headmaster) for their support, wisdom and hard work and also to our part time Director, Janet Kennedy, for her relentless efforts in ensuring that our money is applied carefully in pursuit of our objectives.

I would also like to thank all of you who have donated money to us throughout the year, whether through one-off donations, regular gift aid payments, running the London Marathon or through other fund raising initiatives. Your generosity is greatly appreciated and always warmly welcomed.

Finally, I should like to extend our gratitude to the new Bishop of Southwark, The Rt Revd. Christopher Chessun, who kindly agreed to become our Patron, in succession to his predecessor, continuing an unbroken tradition since the Charity was formed in 1885 as the Charterhouse Mission. We are pleased to have his encouragement and support.



CHAIRMAN
William Naunton

DOWNSIDE FISHER YOUTH CLUB

The Programme ran from 23rd July-31st August and young people could choose from a wide range of activities. Kayaking, sailing, go-karting, outdoor climbing, skateboarding, paint balling, football training, theatre visits, a barbecue, summer camp at Downside Abbey; and a visit to Alton Towers were all included.

240 people aged between 9-17 took part, twelve volunteers aged 16-25 helped to run the programme and 5 young people cycled 130 miles in one day from the summer camp at Downside Abbey in Somerset home to Downside Fisher in Bermondsey. Their sponsorship for the Club raised **£1,100**.

A VOICE WE TRUST

When I became a Trustee of Charterhouse in Southwark (then called the Charterhouse Mission) in the mid-1970s the Mission was still run by a Church of England ordained priest. Apart from the worship at St Hugh's Church core activities revolved around the Boys and Girls clubs based at 32 and 39 Crosby Row.

The Mission had a rather hand-to-mouth existence and was struggling financially to meet running costs. Southwark remained a very poor area - the London docks had closed and there was an influx of immigrant residents of different religious denominations. New leisure venues had been built and this meant the popularity of the Boys and Girls clubs dramatically declined. The Missioner was succeeded by a lay Director, the charity changed its name to Charterhouse in Southwark, and the activities run by the charity took on a more secular nature to meet the needs of the changed local community. An increasing proportion of the activities were funded by Southwark Council, the local authority, and were subject to frequent changes and cut-backs.

Meanwhile the charity struggled to meet core costs and maintain buildings which were old and no longer fit for purpose. The Arc at 39 Crosby Row was converted into a day-nursery in 2001 but that also struggled to meet its running costs.

In 2007 the Trustees decided that the financial resources of the charity were insufficient to enable it to run as it had been and that the remaining assets (principally the buildings) could be better utilised by realising them, investing the proceeds and using the income to support other charitable organisations, primarily in Southwark.

Local charities in similar circumstances which tried to soldier on have fallen in the credit crunch. It is now heartening to know that Charterhouse in Southwark, is secure and able to offer funds to other charitable organisations to support young people in Southwark in a greatly changed environment. It is also very good news that St Hugh's Church, will soon be open in the redeveloped building at 32 Crosby Row where it has been for so many years. We are sure it will thrive for very many years to come.

Charterhouse in Southwark has funded a set of 100 new chairs for the Church in continuance of our long association. Of course, the more Charterhouse in Southwark is supported financially the more it will be able to support young people in need...

TRUSTEE

Armel Cates - Longest serving trustee and former chairman

TRUSTEE'S

William Naunton
Chairman

Charlie Hobson
Master, Sutton's Hospital

Sebastian Lyon
Trustee

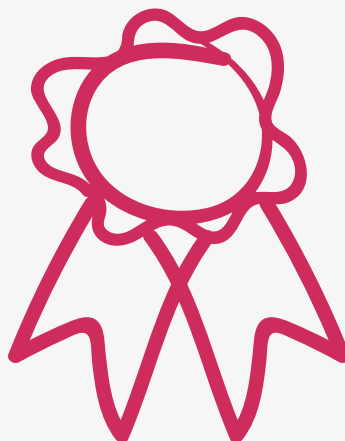
Armel Cates
Trustee

The Revd. John Witheridge
Headmaster

John Gillespie
Trustee

SIXTH FORM SPECIALIST AWARD

This award was for a self-starter who could raise funds for matching, involve Carthusians at all stages, extend their own experience and see philanthropy at work. Jamie Murray, planned this visit from 4th-11th December 2012 in association with the Pirthi Bedi Foundation, a charity helping impoverished people of all religions in the Patiala district of India. The grant bought blankets, food and spectacles for patients. Jamie had to work hard to match the funding from us and he did this through sales of **£5,113** from the 2013 Charterhouse Calendar.



GREENHOUSE SPORTS



The funds have contributed to the club which meets at Burgess Park in Camberwell. There are 640 active members of the club and 23 teams. In the last year the Club has started a Saturday school for 5-12 year olds which also allows the coaches to provide additional training for teams not competing on that Saturday. The club has worked hard to establish a girls' team, the number of under 15s has continued to grow, and there is now a weekly session for over 15s too. The girl's 9-a side team competes in the Greater London League.

“Football appeals to females whatever their age but sometimes the reasons for playing can vary. Our girls play to make friends and compete and many have hopes of becoming professional players. For many of our women they join to get fit and healthy and for a social element, but essentially the training is the same whether you are old or young, male or female. With the addition of the women's team we have a great exit route for our younger girls and we've already started building strong relationships with football academies and local clubs for our most talented players.”

- Bethwin's Women's Football Development Manager

DOWNSIDE FISHER YOUTH CLUB - ASPIRE

The project offers young people not in education, employment or training an opportunity to take their first steps into volunteering, employment skill development, and work-based learning.

Charterhouse in Southwark's grant provides a significant contribution towards the total cost of employing the ASPIRE coordinator. Sixteen Young

Leaders assisted the youth club sessions, 4 completed the NVQ 2 in Gym Fitness, 10 achieved their Literacy and Numeracy qualification, 12 completed a Level 1 qualification in Personal, Social Development, and Introduction to Young People, Law and Order. Five Young Leaders qualified as Pool Lifeguards from Charterhouse in Southwark's 2010/11 funding are now employed as such at Downside Fisher.

ANNUAL MARATHON RUNNERS

As always we are very grateful to those who run the London Marathon for us.

In April 2012 our runners were Martin Winter OC (O'67), Graham Griffiths, Ellison Riddle, Nick Stone, Chok Gurung, Wayne Jacobs and Alec Marven. All participants completed the route in varying but times.

In total they raised the wonderful sum of over **£13,000** for Charterhouse in Southwark.

go Team!

FINANCE REPORT

The 12 months ending 31st March 2013 was the second full year of the new merged Charterhouse in Southwark. The Charity has continued to benefit from the resulting pooling of resources; both in terms of our comparative efficiency and ability to direct help in ways that can make a difference to the young people we are trying to help in the Southwark area and beyond. We have continued to be supported by many regular donors and supporters, and are incredibly grateful for this on-going support. The Trustees are also satisfied with the work done by our new fund managers, with the focus on absolute returns, which mirrors our goal of being able to provide help where it is needed for the long term.

2011-2012 GRANT BREAKDOWN



£10,000

[Downside Fisher Youth Club](#) - Summer project

£7,000

[Peckham Shed](#) - After school drama groups

£15,840

[Charterhouse School](#) - Bursary for a Charterhouse Sixth Form boarding place

£7,850

[Pembroke Walworth](#) - Summer programme

£22,000

[Downside Fisher Youth Club](#) - ASPIRE project

£5,000

[Greenhouse Sports](#) - Supporting Bethwin FC

£8,000

[St Hugh's Bermondsey](#) - £1,000 for their summer project and £7,000 for new chairs at the new church

£5,000

[Charterhouse School](#) - Sixth Form specialist award



DONATIONS

Whether it's time, money or skills, our trustees are always grateful for what we receive. To help us today, please consider a one-off, or for long-term support, a regular donation to help support our charitable work.

Payment may be made electronically to:
Unity Trust Bank, Nine Brindley, Place, Birmingham,
B1 2HB (Sort 60-83-01 Account No. 20053024)

Cheques can be made to the address listed below
If you pay tax in the UK, please consider Gift Aid on
your donation – it helps greatly.

www.justgiving.com/charterhouse

Charterhouse In Southwark
PO. Box 59636, London, SE22 2AD

info@charterhouse-in-southwark.org
charterhouse-in-southwark.org